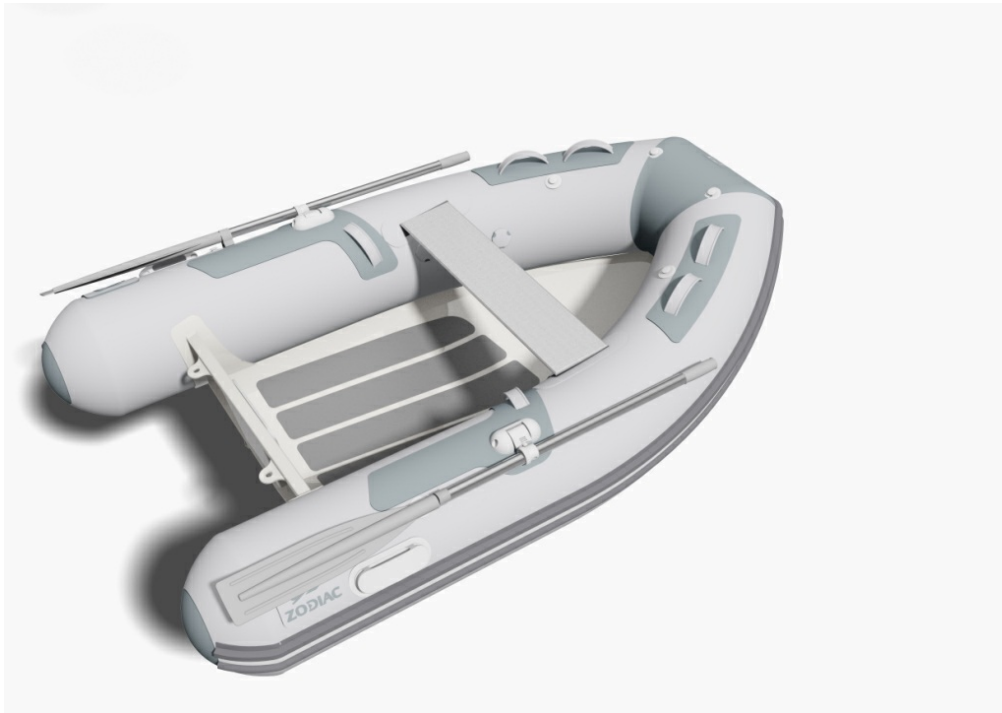




CADET RIB ALU 240 LIGHT

Z11210

CADET RIB ALU LIGHT



ELEGANCE AND STRENGTH

Built to last and generously spacious, a Cadet Rib will elegantly complete your boat. Equipped with large-diameter tubes, they're particularly stable and able to carry many goods and passengers while keeping them dry. Their polyester deep-V-hull allow them to easily lift off water and gain comfort in small waves. Available in two colors, in Strongan™ or Hypalon™ fabric, for intensive use in tropical zones.

Versions

Z11210

CADET RIB ALU 240 LIGHT Version PVC



Technical features

| | | | |
|----------------------------|----------------|--------------------------------------|-------------|
| Weight nu | 33kg | Max. people on board | 3 |
| Max. power | 6CV/HP | Max. weight of engine | 33kg |
| Diameter of tube | 0,41m | Number of tube airtight compartments | 3 |
| Max payload | 298kg | Length overall/inside | 2,43m/1,66m |
| Width overall/inside width | 1,67m/0,78m | Short shaft | |
| Dimensions emballage | 2,10x1,05x0,55 | | |

Standard equipment

| | |
|--|-----------------------------------|
| Engine support plate | Equipement basique + |
| Lifting platform (2 rear and 1 front) | Foot pump |
| Full length keel guard | 1 Bow ring |
| 1 removable bench | Repair kit/Owner's manual |
| Bench bag Cadet / Zodiac waterproof ba | Equipements de confort |
| 2 rear pull rings | 2 Carrying handle/8 inner handles |
| Deflecting rubbing strake | 2 paddles aluminum |

Options and accessories

| | |
|---|-----------------------------------|
| Inflator 12 Volts 800 mb with pressure regulator 450L/min | Comfort launching wheels |
| Lifting sling for davits | Launching roller 2,10m X 0.24 |
| Side-mount bathing ladder | Fishing rod holder |
| Inflator 12 Volts 240 mbar with pressure regulator | Lifting sling /tow. bridle tender |
| Bench bag Cadet | Bow holdall for tenders |
| Pressure gauge | |